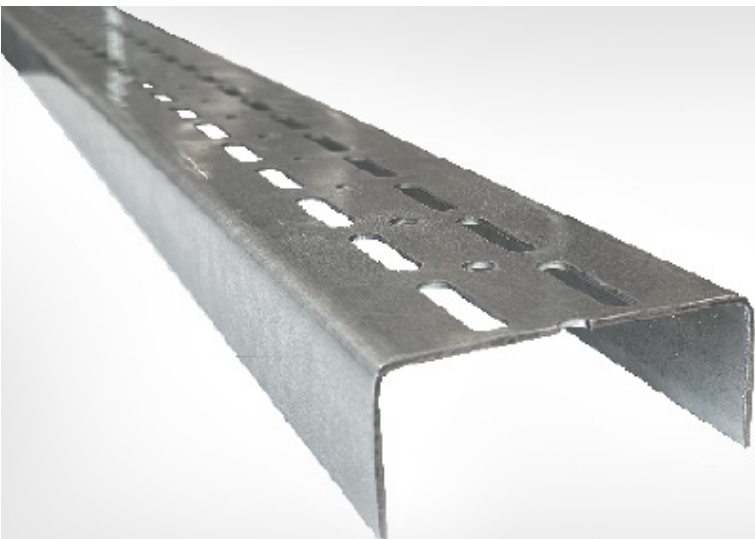


Note on English translation

This is a translation of the technical data sheet valid in Iran.

All stated details and properties are in compliance with the regulations of the Iran standards and building regulations. They are only applicable for the specified products, system components, application rules, and construction details in connection with the specifications of the respective certificates and approvals.

K plus pars denies any liability for applications outside of Iran as this requires changes acc. to the respective national standards and building regulations.



Drywall Systems

## Kplus UA Stud & L Support Angle

Technical Data Sheet

12/2024

# Kplus UA Stud & L Support Angle

### Product description

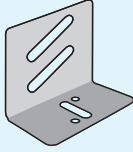
UA Galvanized lightweight steel sections to be used as vertical stud framing for door and window framings of Partitions, and vertical stud framing in high wind load exterior walls and main channels for ceiling system.

UA Profile is cold-rolled from high-grade galvanized steel, which complies with EN10327. All Kplus metal sections comply with INSO 13035, EN 14195 and DIN 18182-1.

Type of Stud	Shape	Gauge (t) mm	Web (b) mm	Flange (h) mm	Length (mm)	Weight (approx.)kg/m	Packaging Unit	
UA 75		2.0	73.8	40	300	2.040	25	
UA 100		350	2.0	98.8	40	400	2.370	25
		450						

## Technical Data

UA L support angle components are used for fixing the UA profiles to the floor and soffit at door and window edges.

Description	Shape	Length (cm)	Gauge (t) mm	Weight (approx.) g	Packaging unit
UAL Support Angle		75	2.0	100	100
		100	2.0	160	100

### Kplus Direct:

No. 19, East Qobadian Alley, Nelson Mandela  
(Africa) Blvd., 19176-34611, Tehran, Iran

### Technical Support Dept.

- ▶ Call Center: (+98) 21 43000809
- ▶ Fax : (+98 21) 88203126

All technical changes reserved. Only the current printed instructions are valid. Our warranty is expressly limited to our products in flawless condition. All application quantities and delivery amounts are based on empirical data that are not easily transferable to other deviating areas. The stated information represents current state-of-the-art Kplus technology. The entire state of approved engineering rules, appropriate standards, guidelines, and rules of craftsmanship are not included herewith. These and all application instructions have to be adhered to separately by the installer.



[www.Kplus.ir](http://www.Kplus.ir)  
[technical@Kplus.ir](mailto:technical@Kplus.ir)

All rights reserved. All amendments, reprints and photocopies, including those of excerpts, require the express permission of Kplus.